



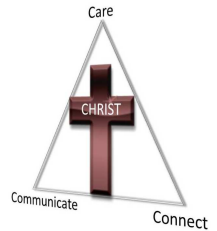
Jesus said, "I am the vine,
You are the branches."
John 15:5

*Our mission:
"Making Christ
known in the com-
munity so that all
may worship Him
and receive the gift
of eternal life"*

GOLDEN GROVE LUTHERAN FELLOWSHIP

www.gglf.org.au

*Our goal:
Care,
Communicate,
Connect
so that people
know CHRIST.*



Pastor Leon Rosenberg

Available through the
Administration Office at
Sunnybrook Drive
Wynn Vale 5127

Ph: Office: 8282 6051
Mobile: 0432 224 721
Home: 8251 4007

Email: rosenberg.leon@
goldengrove.sa.edu.au

9th August 2009—10th Sunday after Pentecost

WELCOME to all worshipping with us today.

Greetings to any visitors here with us. We are pleased to have you join us and we trust you have felt welcomed and pray the Holy Spirit may enlighten and empower us with the messages shared with us today



Tea & coffee is available in the Fellowship Centre following morning service and at 5.45 pm a light tea is available prior to the evening service at 6.30 pm
Please feel welcome to join us.

TWO MINUTES

John 6; 35. "I am the bread of life. He who comes to me will never go hungry, and he who believes in me will never be thirsty".

Bread plays an important part in our everyday lives. We eat it in all its forms and some of us make our own bread. How mouthwatering is the smell of freshly baked bread wafting through the house! We refer to it in our language as in "bread winner", "earn a crust", bread basket, breadline; in our prayers, "give us each day our daily bread" and in our hymns as in "bread of heaven". We read that when Moses led the Israelites out of Egypt, into the Wilderness, searching for the Promised Land, God rained manna (bread) from heaven to sustain them and still they were not satisfied. The bread that Jesus gives to us is not a wholemeal or nine grain loaf, this would only satisfy our physical hunger for perhaps a day or two. The bread that Jesus gives us, is Himself, a spiritual sustenance that will last us for the rest of our lives and into eternity! His bread is lovingly and willingly given. We just have to go to Him, tell Him how hungry we are and we can then trust in His love and promise of eternal life.

Pauline Taylor

Worship Opportunities

| | | |
|---------------------------|----------------------------|--|
| Today 9th August | 9.30 am 6.30 pm | Contemporary worship with HC Salt Factory worship |
| Friday 14th August | 8.45-9.15 am | Informal worship with school community followed by Coffee Club |
| Sunday 16th August | 9.30 am 6.30 pm | Contemporary worship Salt Factory worship with HC |
| Friday 21st August | 8.45-9.15 am | Informal worship with school community followed by Coffee Club |

Readings for today

1 Kings 19:4-8

Eph. 4:25—55:2

John 6:35, 41-51

Readings for 16 August

Prov. 9: 1- 6

Eph. 5:15-20

John 6:51-58

Family Friendly Worship

At Golden Grove, we love **everybody** to be involved in worship.

Please encourage children and visitors to join in the singing and prayers, and to stand and sit at appropriate times when they are able. This is best done by leading by example!

For our 'little ones' - Quiet bags & busy books are available for worship time from the children's area inside the church.

Activity sheets for young readers and writers—Families with children of all ages, please notice there are new activity sheets (e.g. word puzzles) available for various age groups. The sheets will be changed over periodically. Please help yourself - they can be found with the children's toys, pens and papers etc.

It is not appropriate for unattended children to play in the foyer at any time during the service. Please ask an usher if you require assistance, or speak to a "Ministry Leader" if you would like to help young families during worship times.

Thank you for worshipping with us!

Pastor's Column

How do you picture God? One image the Bible gives us of God, from 2 Chronicles 14 and 15 is "**The Lord waiting to be found**". 2 Chronicles 15:2b reads "*The Lord is with you when you are with him. If you seek him, he will be found by you, but if you forsake him, he will forsake you.*" This morning we are going to look more closely at this picture and think through how we respond to Him. We'll look at turning to Him, being strong in Him, not giving up on Him and renewing our covenant to seek Him. I pray that you may respond to Him. He *is* waiting to be found!

A special welcome to **Isabelle Wilson** and her family Tamara, Daniel and Poppy. Isabelle is receiving God's gift of Baptism this morning. Isn't this a wonderful way God "finds us"?

I shall be away at the District's Pastors' Conference later in the week and at Synod next weekend, both at **Mt Gambier**. Pastor Len will be taking the service in the morning and Paul will be speaking at Salt Factory. We'll transfer Holy Communion to the following Sunday (23rd August) evening.

Are you planning to join the fishers at the Onkaparinga River this afternoon for our next **GGAF event**?

Keep your ears open for the "**Fishing Fete**" coming up in November to find out how you can be involved!

Pastor Leon

This week:

Tuesday: Management team.

Wednesday: Head to Heart at 3.45pm

Wednesday: Neighbourhood Watch.

Friday: Worship at 8.45am

(Unless otherwise stated all meetings start at 7.30pm)



THANKYOU to all those who supported our recent '**L' Dinner** fundraiser.

Special thanks also to the catering team who worked so diligently and professionally and provided a deliciously beautiful meal. \$3045 was raised from ticket sales plus raffles, quizzes and auctions held on the evening

THANKYOU also to all those who supported Playgroup's recent Kytons Bakery fundraiser.

\$230 was raised and the money will go towards upgrading to some new toys and a quiet reading centre for the children.

Salt Factory Worship

Tonight: 6.30 pm service— Come from 5.45 pm onwards for food (gold coin donation) and drinks (\$1)

Please note: Rostered for catering next Sunday 16th August — Kloeden/Nelson group



Baptism

Joining God's family today through the gift of Holy Baptism is

Isabelle Jessica Wilson

We are delighted to share in the celebration of this special occasion with Isabelle, her parents Tamara & Daniel, her sponsors Brett & Cherie Shillabeer and Jodie Kehoe, together with family and friends here with us today.

We pray Isabelle may continue to grow in the love & strength of God



Baptism, I baptize you in the name of the Father, and of the Son, and of the Holy Spirit



Golden Grove Amateur Fishing ONKAPARINGA RIVER (Southport Beach) TODAY, 12.30—5.30 pm

Parking near footbridge on Weatherald Terrace, Port Noarlunga South.

Note: Toilets are nearby

- Fishing in the river or the outlet on the beach
- Fishing for mullet, salmon, tommies, etc
- Suggested bait is cockles, whitebait, gents, etc.
- Opportunity to stay for tea at a local venue

Enquiries contact Graeme Hoklas (0419 828 091) or Zimmo (82891212)

Wednesday morning Craft Group 9.30-12 noon G.I.F.T. (Getting it finished together)

Come and join us for a cuppa with or without your craft. It doesn't matter whether you are doing needlework or papercraft etc. or not, please feel free to pop in and enjoy some fellowship with like minded ladies and children (usually). The home environments we meet in are child friendly. All enquiries phone Lesley on 0402036183.



Servant September



Time Sunday – September 6th

LCA Sunday – September 13th

Treasures Sunday – September 20th

Talents Sunday – September 27th

We are looking for small groups to 'adopt' a Sunday and organise a visual display for the worship services (similar to last year's Season of Creation). Contact the Worship Team if you are interested in helping out!

KIDS AT HEART

If there is anyone who would like to organise a kids craft over the next 3 months, please let me know, as I prepare a roster. Thank you to the wonderful donors who have made contributions to craft material stock. We have a wide variety of supplies now, and the only problem we have now is storage!

Please give a prayer of thanks for all the contributors who are sharing their gifts in service in our fellowship. Maybe a prayer of thanks for the children who are participating in the craft so quietly and creatively too?

Blessings,
Lesley and the [K@H](#) team.
Paul Swansson, Adele Leach, Emi Schutz, Dave Shrowder, Pastor Leon

Seeking volunteers—Royal Adelaide Show

The Bible League Adelaide Show Outreach is looking for willing people to work a three-hour shift at this year's Royal Adelaide Show. The work—as ambassadors of Christ no less—is not onerous.

Volunteers are supplied with entry passes to the Showgrounds enabling volunteers to spend time at the Show before or after their shift(s).

If anyone is interested in giving their time to this you will need to fill in a volunteer's enrolment form (available from our church foyer) and return to the convenor by **Monday 10th Aug 2009**.

FINAL
CALL TO
HELP

MEN'S MINISTRY

Men's Breakfast—Saturday 12th September, 7.30-9.00 am in the Fellowship Centre.

Guest speaker is our Youth Team Leader Paul Swansson speaking on "My Journey to GGLF"

Bacon and eggs breakfast

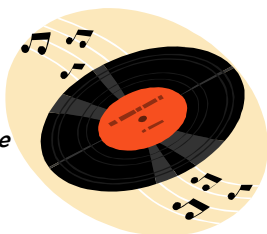
Cost \$6.00 head.

Enquiries to Ken Campbell: 0421 428 555 or 8265 3106

ENDEAVOUR COLLEGE CABARET 2009

Dancing in the Street

Funk & Soul of the 60s & 70s



FRIDAY 14th August 2009, 7.30 pm

At Endeavour Centre
85 Mawson Lakes Blvd, Mawson Lakes

**ADULTS \$18/ CONCESSION \$15
PHONE 8368 3311 FOR SINGLE OR
GROUP BOOKINGS**

**BRING A BASKET SUPPER, LOOSE CHANGE &
YOUR DANCING SHOES!**

AND BE SURE TO WEAR YOUR FUNKIEST GEAR!



'CC' - Children of Christ

(For children in Yrs 3-6)

Introducing our new CC's team from Term 3



Tiffany Tilley



Kylie Till



Vicki Abraham

**Next CC night will be Friday 14th August 2009,
6.30—8.00 pm** in the Fellowship Centre

"Master chef"

Volunteers are always welcome. This may mean occasionally helping with supper or assisting a group of children with an activity. Any help would be appreciated.

For more details contact Tiffany (8289 6067), Kylie (0402081692), Vicki (8289 9305)

Wine & Cheese Evening

Saturday 22nd August, 7.15-10.15 pm
in the Fellowship Centre

Guest speaker—Julie Hahn

This is always an enjoyable evening, full of interest, fellowship and fun. It is open to all members, your friends and neighbours

A crèche will be provided.

Cost: \$6.00 per head or \$10.00 per family for supper including finger food, nibbles, a fine selection of cheese & wine, soft drinks, tea & coffee.



LUTHERAN COMMUNITY CARE
'Sharing the love of Christ - building caring communities'

BASIC COUNSELLING COURSE

Ten Sessions

**Beginning Tuesday, August 18, 2009
4.45pm-7.15pm**

at

Lutheran Community Care
Centre for Learning
19 Edward Street, Magill.

This course introduces basic counselling skills with an emphasis on responsive listening techniques and finally, goal setting. The course is suitable for volunteers, visitors, church workers, youth workers and anyone who wishes to learn how to respond more effectively and comfortably to others experiencing difficulties in their lives.

Cost: \$22/sessions or \$210.00 for whole course.

Concessions apply.

For more information:

Contact: Helene Schulz T: 8331 3111; E:
hschulz@lccsa.org.au

For reflection...

I do not at all understand the mystery of grace - only that it meets us where we are but does not leave us where it found us.

Anne Lamott

Prayer Chain

Means a lot of people praying about an urgent or special need. For urgent prayer requests during the week you are invited to contact one of following people and the prayer chain will be set in progress. (Chris Hahn, Jan Wegener, Pastor Len & Claire Tscharke, Catherina & Wim Belgraver, Joan Hochwald, Tanya Wilson, Judith Whaites.)

All requests will be kept confidential.

The prayer chain is available for everyone in both the church and school communities. Likewise if anybody feels they would like to be a part of the prayer chain we'd love you to join us.

Video Ministry

Each service is video taped, with copies available immediately after each service. Please see the library to loan a copy. Even if you can't make it to the service, you can still participate in worship.

Bibles

Bibles are available at the back of the church so that you can follow the Readings and Bible references in the Sermon.

We offer you one of these Bibles to take home, if you need one, and possibly bring back each week (so that *the one you use at home is the one you use in church*). If you would like to make a donation towards it - \$10 would be appreciated.

Meals Ministry

(A practical way we can share & show God's love)
Families rostered to support Meals Ministry in August are: Neale, Canavese, Whaites.
 When donating meals for the freezer we ask that you please attach some details to the container, eg name of the meal, date meal was prepared, a list of main ingredients, and heating instructions.
Thank you.

Library

Don't forget the Library is open for browsing and borrowing.
 Christian greeting cards always for sale from the Mobile Unit in the Fellowship Centre — Cost \$2

GGLF Attendance & Offerings

(Offerings do not include electronic giving amount of \$10392.92 per month from 38 contributors.)

| | | Attendance | Offerings |
|---------|---------|------------|-----------|
| Sun 2/8 | 9.30 am | 63 | \$302.00 |
| | 6.30 pm | 70 | \$360.75 |

TOGETHER

The August edition of this publication is available from your pigeon hole today.

POSITIONS VACANT

Indigenous Lay Worker – Aboriginal Ministry South Australia, Port Augusta – 10 hours

Applications close 5.00 p.m. Monday 10th August 2009

Mission Facilitator, SA/NT District

Applications close 5.00 p.m. Monday 20th August 2009

Ministry Coordinator to Families with Young Children – Zion Lutheran Church, Gawler, SA - 20 hours

Applications close 5.00 p.m. Monday 21st August 2009

Please refer to noticeboard for details on above positions



LCA, SA/NT District

District Office
 Job Opportunity
Personal Assistant to the President

30 hours per week

Commencing October 2009

Contact Judi on 8267 5211
 or email judi.sykes@sa.lca.org.au
 for information and job description

Applications close
 Friday 28 August 2009

Internet access to weekly GGLF bulletin, Sermon, Life in the Vine, rosters and other info. You can get to it by going to www.gglf.org.au and then clicking Files.

Friends of Lutheran Archives

Meeting— Topic: Virtual tour of Langmeil Cemetery.

Speakers: Ev Leske & Don Ross. Hear the stories of many notable Lutherans of the past.

At Bethlehem House, Sudholz Pl, Adelaide on Monday 10 August at 7.30 pm. Supper. Gold coin donation.

Are you interested in what is happening to the health services at Modbury Hospital? What is a Super Clinic and what does this mean for the community?

City of Tea Tree Gully invites interested community members to a formal presentation by Minister for Health, Mr John Hill on **Tuesday 11th August, at 7.00 pm** at the City of Tea Tree Gully Council Chambers in the public gallery.



LUTHERAN MEDIA

Also refer to flyer on Notice board for program details.

Listen to Face to Face

9th August The Loss of a Lifetime Pt 1

Marge & Ken had been married for over 40 years and had many sweet memories. Now, memory was becoming their most difficult struggle.

Ken was showing the early signs of Alzheimer's, a disease that probably all of us dread.

Join Richard Mau. this week on Face to Face as he talks about the beginning and moderate stages of Alzheimer's and be encouraged by the story of Marge and Ken.

Pastor Leon's Message

is available in printed copy form immediately after the service from the Church Foyer. Please feel welcome to take a copy home.

BIRTHDAY GREETINGS

| | | |
|-------|--------|-----------------------------|
| Mon | 10 Aug | Melita Rogers |
| Tues | 11 Aug | Sonya Flynn Mark Abraham |
| Wed | 12 Aug | Pauline Taylor |
| Thurs | 13 Aug | Bob Longmire |
| Sat | 15 Aug | Chloe Wachtel |

We hope your special day is blessed with God's love & grace

GOLDEN GROVE LUTHERAN FELLOWSHIP

Pastor: Leon Rosenberg

GGLPS Principal: Daryl Trigg

Church Office:

Sunnybrook Drive
 Wynn Vale 5127

Postal Address:

PO Box 1371
 Golden Grove 5125

Phone: (08) 8282 6050
 Email: office@gglf.org.au

Church Office Secretary:
 Judith Whaites

Youth Team Leader:

Paul Swansson
 0432 646 064

Vision for Ministry Team:

Pastor Leon
 Daryl Trigg
 Geoff Thiel
 Paul Swansson
 Daniel Bartel
 Jon Schiller
 Brian Quick
 Christiaan Hersevoort

Management Team

| | |
|----------------------|------------------|
| <i>Chairperson</i> | John Fielke |
| <i>Vice Chair</i> | |
| <i>Secretary</i> | Elnora Schmocker |
| <i>Treasurer</i> | Dorothy Quick |
| <i>Assist. Treas</i> | Graeme Hoklas |
| <i>Property</i> | Daniel Bartel |
| <i>Ministry rep</i> | James Leach |
| <i>Extra Member</i> | Dave Shrowder |