



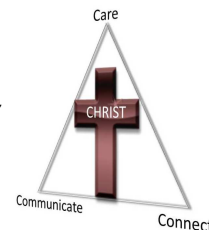
Jesus said, "I am the vine,
You are the branches."
John 15:5

*Our mission:
"Making Christ
known in the com-
munity so that all
may worship Him
and receive the gift
of eternal life"*

GOLDEN GROVE LUTHERAN FELLOWSHIP

www.gglf.org.au

*Our goal:
Care,
Communicate,
Connect
so that people
know CHRIST.*



Pastor Leon Rosenberg

Available through the
Administration Office at
Sunnybrook Drive
Wynn Vale 5127

Ph: Office: 8282 6051
Mobile: 0432 224 721
Home: 8251 4007

Email: rosenberg.leon@
goldengrove.sa.edu.au

2nd August 2009—9th Sunday after Pentecost

WELCOME to all worshipping with us today.

Greetings to any visitors here with us. We are pleased to have you join us and we trust you have felt welcomed and pray the Holy Spirit may enlighten and empower us with the messages shared with us today



Tea & coffee is available in the Fellowship Centre following morning service and at 5.45 pm a light tea is available prior to the evening service at 6.30 pm Please feel welcome to join us.

TWO MINUTES

Jesus the Bread of Life John 6:25 – 35

The crowd tracked Jesus down. He'd done a disappearing act but they'd found him. Galilee was a-buzz with news of this miracle worker, the Prophet who was to come into the world – changing water into wine, healing the blind, deaf and lame, even feeding thousands of people. Perhaps all that some were looking for was a free feed but there were others who knew there was more to this man than merely catering for their physical needs. They remembered the stories of their forefathers, how they'd been fed and sustained in the wilderness with bread from heaven. Now amongst them comes this man promising that he is the bread that comes down from heaven and gives life to the world.


How about us? Do we treat Jesus like a vending machine, only coming to him when we want something? Pop the request in and wait for the handout. Or do we regard him as bread from heaven, the Bread of Life? The one who sustains, provides, nurtures and nourishes on our road to eternal life. The one who feeds our souls and satisfies the hunger pangs of spiritual emptiness and yearning.

Dear Lord and Saviour, Bread of Heaven, thank you for your promise that whoever comes to you will never be hungry and whoever believes in you will never be thirsty. Lord, I claim that promise as my own. Amen.

Anna Watson

Worship Opportunities

Today 2nd August	9.30 am 6.30 pm	Contemporary worship Salt Factory worship with HC
Friday 7th August	8.45-9.15 am	Informal worship with school community followed by Coffee Club
Sunday 9th August	9.30 am 6.30 pm	Contemporary worship with HC Salt Factory worship
Friday 14th August	8.45-9.15 am	Informal worship with school community followed by Coffee Club


Readings for today
Exodus 16:2-4, 9-15
Eph. 4:1-16
John 6:24-35

Readings for 9 August
1 Kings 19:4-8
Eph. 4:25—55:2
John 6:35, 41-51

Family Friendly Worship

At Golden Grove, we love everybody to be involved in worship.

Please encourage children and visitors to join in the singing and prayers, and to stand and sit at appropriate times when they are able. This is best done by leading by example!

For our 'little ones' - Quiet bags & busy books are available for worship time from the children's area inside the church.

Activity sheets for young readers and writers—Families with children of all ages, please notice there are new activity sheets (e.g. word puzzles) available for various age groups. The sheets will be changed over periodically. Please help yourself - they can be found with the children's toys, pens and papers etc.

It is not appropriate for unattended children to play in the foyer at any time during the service. Please ask an usher if you require assistance, or speak to a "Ministry Leader" if you would like to help young families during worship times.

Thank you for worshipping with us!

Pastor's Column

Today we are privileged to have our **Youth Team Leader**, Paul Swansson speak to us in the morning service. (I am away at my niece's confirmation service at Zion, Glynde.)

Tonight at **Salt Factory**, we have an opportunity to hear Michael Edgecomb (*the Director of Youth, Child & Family ministry at our District Church Office*) speak to us. Welcome Michael. It is a Holy Communion service this evening. Come along at 5.45pm and enjoy fellowship over an evening meal.

You will notice a special evening on Tuesday: "**Kaleb's Journey**". You might have read about this in the Newspaper earlier in the week (Tuesday). I fully endorse this. Come along to the meeting to find out more about this and to discover how you can be involved. You don't have to ride the whole way - you might like to "tag team". You can come along as a support person or sponsor the ride.

In regard to the **Ministry Team**: Have you enrolled for the Global Leadership Summit? Do you want to discover your spiritual gifts? - the Network Course is being offered again soon. We haven't forgotten about Introducing God. James Leach, one of our the Ministry Team members, is still trying to organize this at GGLF.

You might also notice that we have our **next fishing event next Sunday**. As the team stated last Sunday – during the Kids at Heart family service— you don't have to fish to come along! Keep your ears open for the "**Fishing Fete**" coming up in November, to find out how you can be involved!

Pastor Leon

This week:

Tuesday: *Kaleb's Journey meeting (push bike ride from Melbourne, organized by Melissa Bussenschutt)* .

Wednesday: Head to Heart at 3.45pm

Wednesday: Ministry Team.

Thursday: Pastoral Carers

Friday: Worship at 8.45am

Next Sunday: GGAF at Onkapringa River 12.30pm

(Unless otherwise stated all meetings start at 7.30pm)

REV₃₂₀

CARDS NIGHT
Friday 7th August
7-10 pm in the
Fellowship Centre

Bring your card games & \$4

For any enquiries please contact
Paul Swansson 0432 646 064

Salt Factory Worship

Tonight: 6.30 pm service— Come from 5.45 pm
onwards for food (gold coin donation) and drinks (\$1)

Please note: Rostered for catering next Sunday 9th August — Schmocker group

Kaleb's journey

www.kalebsjourney.org

Melissa & Scott Bussenschutt have put together a letter (*in last week's school newsletter but copies are also available from the church foyer*) sharing about their son Kaleb's journey and their plans for a fundraising bike ride from Melbourne to Adelaide. They invite you to a special evening this **Tuesday 4th August, 7.30 pm in the Fellowship Centre** where they will share information on their plans and how you can support this cause.

Wednesday morning Craft Group 9.30-12 noon

G.I.F.T. (Getting it finished together)

Come and join us for a cuppa with or without your craft. It doesn't matter whether you are doing needlework or papercraft etc. or not, please feel free to pop in and enjoy some fellowship with like minded ladies and children (usually). The home environments we meet in are child friendly. This week we meet at Lesley Friedrich's, 10 Holly place Golden Grove. All enquiries phone Lesley on 0402036183.



Introducing our Worship Team:

Standing: Margey(secretary), Jacqui (Bands coordinator), Paul (as YTL), Brian (coordinator),
Kneeling: Anna (go between church and school and rosters), Pastor Leon , Ivan (go between Salt Factory and morning service).

This team meets each month to discuss our worship - in particular our

Sunday morning worship (We have a Salt Factory Team as well and our School organizing the Friday morning worship.).

The main item on our agenda these days is "Servant September". Although next meeting we are receiving plays for the Christmas Eve program.

If you have any comments about worship, any suggestions and anyway you would like to be involved please see one of the members of the team.

Don't forget our first value statement: "We value casual, Christ-centred worship where people use their gifts"



Servant September



Time Sunday – September 6th

LCA Sunday – September 13th

Treasures Sunday – September 20th

Talents Sunday – September 27th

We are looking for small groups to 'adopt' a Sunday and organise a visual display for the worship services (similar to last year's Season of Creation).
Contact the Worship Team if you are interested in helping out!

KIDS AT HEART



Thank you to all the helpers and participants who were involved in the [K@H](#) family service last Sunday morning. There was a large team contributing behind the scenes, and to mention names would risk leaving someone out, so please accept our general thanks!

We hope it was enjoyable for everyone, with many different activities to stimulate young and old brains alike. As always, we are open to feedback about the Kids at Heart services, so please let us know what you enjoyed most and if you have suggestions for improvement. (You probably don't need to tell us that the icecream is a hit!) Keeping in mind that we can't please all the people all the time, we do listen to your suggestions and strive to meet the needs of many.

If there is anyone who would like to organise a kids craft over the next 3 months, please let me know, as I prepare a roster. Thank you to the wonderful donors who have made contributions to craft material stock. We have a wide variety of supplies now, and the only problem we have now is storage!

Please give a prayer of thanks for all the contributors who are sharing their gifts in service in our fellowship. Maybe a prayer of thanks for the children who are participating in the craft so quietly and creatively too?

Blessings,

Lesley and the [K@H](#) team.

Paul Swansson, Adele Leach, Emi Schutz, Dave Shrowder, Pastor Leon

Seeking volunteers—Royal Adelaide Show

The Bible League Adelaide Show Outreach is looking for willing people to work a three-hour shift at this year's Royal Adelaide Show. The work—as ambassadors of Christ no less—is not onerous.

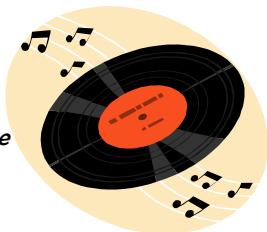
Volunteers are supplied with entry passes to the Showgrounds enabling volunteers to spend time at the Show before or after their shift(s).

If anyone is interested in giving their time to this you will need to fill in a volunteer's enrolment form (available from our church foyer) and return to the convenor by Monday 10th Aug 2009.

ENDEAVOUR COLLEGE CABARET 2009

Dancing in the Street

Funk & Soul of the 60s & 70s



FRIDAY 14th August 2009, 7.30 pm

At Endeavour Centre

85 Mawson Lakes Blvd, Mawson Lakes

**ADULTS \$18/ CONCESSION \$15
PHONE 8368 3311 FOR SINGLE OR
GROUP BOOKINGS**

**BRING A BASKET SUPPER, LOOSE CHANGE &
YOUR DANCING SHOES!**

AND BE SURE TO WEAR YOUR FUNKIEST GEAR!

Taste & See Some More THE LORD IS GOOD

“Bearing Fruit” – the fruit of the Spirit
Saturday August 8th 2009, 9.15am – 4.00pm

Presented by **RUTH OLSEN**

Hosted by and at **St John's Lutheran Church**
Tea Tree Gully (see noticeboard)



Golden Grove Amateur Fishing

ONKAPARINGA RIVER (Southport Beach)

Sunday 9th August, 12.30—5.30 pm

Parking near footbridge on Weatherald Terrace, Port Noarlunga South.

Note: Toilets are nearby

- Fishing in the river or the outlet on the beach
- Fishing for mullet, salmon, tommies, etc
- Suggested bait is cockles, whitebait, gents, etc.
- Opportunity to stay for tea at a local venue

Enquiries contact Graeme Hoklas (0419 828 091) or Zimmo (82891212)

Wine & Cheese Evening

Saturday 22nd August, 7.15-10.15 pm
in the Fellowship Centre

Guest speaker—Julie Hahn

This is always an enjoyable evening, full of interest, fellowship and fun. It is open to all members, your friends and neighbours

A crèche will be provided.

Cost: \$6.00 per head or \$10.00 per family for supper including finger food, nibbles, a fine selection of cheese & wine, soft drinks, tea & coffee.



LUTHERAN COMMUNITY CARE

“Sharing the love of Christ - building caring communities”

BASIC COUNSELLING COURSE

Ten Sessions

**Beginning Tuesday, August 18, 2009
4.45pm-7.15pm**

at

Lutheran Community Care
Centre for Learning
19 Edward Street, Magill.

This course introduces basic counselling skills with an emphasis on responsive listening techniques and finally, goal setting. The course is suitable for volunteers, visitors, church workers, youth workers and anyone who wishes to learn how to respond more effectively and comfortably to others experiencing difficulties in their lives.

Cost: \$22/sessions or \$210.00 for whole course.

Concessions apply.

For more information:

Contact: Helene Schulz T: 8331 3111; E: hschulz@lccsa.org.au

Prayer Chain

Means a lot of people praying about an urgent or special need. For urgent prayer requests during the week you are invited to contact one of following people and the prayer chain will be set in progress. (Chris Hahn, Jan Wegener, Pastor Len & Claire Tscharke, Catherina & Wim Belgraver, Joan Hochwald, Tanya Wilson, Judith Whaites.)

All requests will be kept confidential.

The prayer chain is available for everyone in both the church and school communities. Likewise if anybody feels they would like to be a part of the prayer chain we'd love you to join us.

Video Ministry

Each service is video taped, with copies available immediately after each service. Please see the library to loan a copy. Even if you can't make it to the service, you can still participate in worship.

Bibles

Bibles are available at the back of the church so that you can follow the Readings and Bible references in the Sermon.

We offer you one of these Bibles to take home, if you need one, and possibly bring back each week (so that *the one you use at home is the one you use in church*). If you would like to make a donation towards it - \$10 would be appreciated.

Meals Ministry

(A practical way we can share & show God's love) Families rostered to support Meals Ministry in August are: Neale, Canavese, Whaites.

When donating meals for the freezer we ask that you please attach some details to the container, eg name of the meal, date meal was prepared, a list of main ingredients, and heating instructions.

Thank you.

Library

Don't forget the Library is open for browsing and borrowing.

Christian greeting cards always for sale from the Mobile Unit in the Fellowship Centre — Cost \$2

GGLF Attendance & Offerings

(Offerings do not include electronic giving amount of \$10945.80 per month from 36 contributors.)

	Attendance	Offerings
Sun 26/7 9.30 am	125	\$874.50
6.30 pm	30	\$ 93.45

FOR URGENT SALE:

Queen waterbed \$600; 3 sets, near new, built in robes with rails, shelving & drawers \$600 each; Braemar ducted heating and separate Coolair cooling \$900 each; Gabled pergola 5.5 m x 5.6 m \$1700; plus wall units and lounge suite. Call Mandy 0412 560 982.

POSITIONS VACANT

Indigenous Lay Worker – Aboriginal Ministry South Australia, Port Augusta – 10 hours

Applications close 5.00 p.m. Monday 10th August 2009

Mission Facilitator, SA/NT District

Applications close 5.00 p.m. Monday 20th August 2009

Ministry Coordinator to Families with Young Children – Zion Lutheran Church, Gawler, SA - 20 hours

Applications close 5.00 p.m. Monday 21st August 2009

Please refer to noticeboard for details on above positions



LCA, SA/NT District

District Office
Job Opportunity

Personal Assistant to the President

30 hours per week

Commencing October 2009

Contact Judi on 8267 5211
or email judi.sykes@sa.lca.org.au
for information and job description

Applications close
Friday 28 August 2009

Internet access to weekly GGLF bulletin, Sermon, Life in the Vine, rosters and other info. You can get to it by going to www.gglf.org.au and then clicking Files.

City of Tea Tree Gully invite interested people to a **Community Grants Forum** to be held on **Wednesday 5th August 2009, 5.45-8.30 pm** at the **Civic Centre**, 571 Montague Road, Modbury. Ph 8397 7444 for bookings.

Learn about CTTG Grant Programs & about applying for grants for project ideas. Supper provided

Friends of Lutheran Archives

Meeting— Topic: Virtual tour of Langmeil Cemetery.

Speakers: Ev Leske & Don Ross. Hear the stories of many notable Lutherans of the past.

At Bethlehem House, Sudholz Pl, Adelaide on Monday 10 August at 7.30 pm. Supper. Gold coin donation.



LUTHERAN MEDIA

Also refer to flyer on Notice board for program details.

Listen to Face to Face

2nd August More than Sympathy

The suburban sprawl continues to grow in Australia while rural communities face shrinking populations and resources. It's natural for those in the minority to feel uncared for and misunderstood. The water crisis has helped bring about a sympathy for those on the land but is sympathy enough? Our guest Rob Schubert looks at the example of Jesus and discovers what it takes to truly understand someone else's situation.

Pastor Leon's Message

is available in printed copy form immediately after the service from the Church Foyer. Please feel welcome to take a copy home.

Today	2 Aug	Graeme Hoklas
Mon	3 Aug	Sue Prideaux Tayla Kuchar
Tues	4 Aug	Ruth Zimmermann Jon Schutz Brodie Bartel
Thurs	6 Aug	Blake Kloeden Emily Nelson
Sat	8 Aug	Jeff Wegener

We hope your special day is blessed with God's love & grace

GOLDEN GROVE LUTHERAN FELLOWSHIP

Pastor: Leon Rosenberg

GGLPS Principal: Daryl Trigg

Church Office:

Sunnybrook Drive
Wynn Vale 5127

Postal Address:

PO Box 1371
Golden Grove 5125

Phone: (08) 8282 6050
Email: office@gglf.org.au

Church Office Secretary:
Judith Whaites

Youth Team Leader:

Paul Swansson
0432 646 064

Vision for Ministry Team:

Pastor Leon
Daryl Trigg
Geoff Thiel
Paul Swansson
Daniel Bartel
Jon Schiller
Brian Quick
Christiaan Hersevoort

Management Team

<i>Chairperson</i>	John Fielke
<i>Vice Chair</i>	
<i>Secretary</i>	Elnora Schmocker
<i>Treasurer</i>	Dorothy Quick
<i>Assist. Treas</i>	Graeme Hoklas
<i>Property</i>	Daniel Bartel
<i>Ministry rep</i>	James Leach
<i>Extra Member</i>	Dave Shrowder