



**Pastor Leon Rosenberg**

Available through the  
Administration Office at  
Sunnybrook Drive  
Wynn Vale 5127

Ph: Office: 8282 6051  
Mobile: 0432 224 721  
Home: 8251 4007

Email: [rosenberg.leon@  
goldengrove.sa.edu.au](mailto:rosenberg.leon@goldengrove.sa.edu.au)

26th July 2009—8th Sunday after Pentecost

**WELCOME to all worshipping with us today.**

Greetings to any visitors here with us. We are pleased to have you join us and we trust you have felt welcomed and pray the Holy Spirit may enlighten and empower us with the messages shared with us today



Tea & coffee is available in the Fellowship Centre following morning service and at 5.45 pm a light tea is available prior to the evening service at 6.30 pm  
Please feel welcome to join us.

**TWO MINUTES**

The readings today talk about God's abundant provision for us. He provided food for the group of prophets in the days of Elisha, and in Jesus time, fed the 5000. He not only provided enough food for the people to eat, but there were leftovers!

How great is His unconditional love for us – how broad, long, high and deep is Christ's love. God knows our needs and provides for us, often even before we ask – and He provides abundantly – more than enough, so that we in turn can give to others. Not only does he provide for our physical needs, but our most important need - salvation. He gave up his only son, Jesus, to die so that we might live eternally. How often we forget to trust in Him, and try to do it all ourselves. Only when we hand it all over to Him, do we experience his amazing love, peace and provision. We can trust Him completely, just like children who trust in their parents to provide for them and look after all their needs. How great is our God – to him be the glory always.

**Jan Wegener**

**Worship Opportunities**

**Readings for today**  
**2 Kings 4:42-44**  
**Eph. 3:14-21**  
**John 6: 1-21**

Readings for 2 August  
Exodus 16:2-4, 9-15  
Eph. 4:1-16  
John 6:24-35

<b>Today 26th July</b>	<b>9.30 am</b> <b>6.30 pm</b>	Kids at Heart Family Service with HC Salt Factory worship
<b>Friday 31st July</b>	<b>8.45-9.15 am</b>	Informal worship with school community followed by Coffee Club
<b>Sunday 2nd August</b>	<b>9.30 am</b> <b>6.30 pm</b>	Contemporary worship Salt Factory worship with HC
<b>Friday 7th August</b>	<b>8.45-9.15 am</b>	Informal worship with school community followed by Coffee Club



**Family Friendly Worship**

At Golden Grove, we love everybody to be involved in worship.

Please encourage children and visitors to join in the singing and prayers, and to stand and sit at appropriate times when they are able. This is best done by leading by example!

For our 'little ones' - Quiet bags & busy books are available for worship time from the children's area inside the church.

**Activity sheets for young readers and writers—Families with children of all ages, please notice there are new activity sheets (e.g. word puzzles) available for various age groups. The sheets will be changed over periodically. Please help yourself - they can be found with the children's toys, pens and papers etc.**

It is not appropriate for unattended children to play in the foyer at any time during the service. Please ask an usher if you require assistance, or speak to a "Ministry Leader" if you would like to help young families during worship times.

**Thank you for worshipping with us!**

# Pastor's Column

Welcome to our **Kids at Heart Family Service** this morning. Our theme is "*The Catch of Fish*" as you can probably tell this already. Thanks to the Kids at Heart team for preparing the service this morning, and to GGAF for their presentation.

This morning we are welcoming **Heather Vogt**, the Principal of Endeavour College at Mawson Lakes, who will be speaking to us after the service.

This evening after the *Salt Factory* service **Valdis Andersons**, the Communications Officer at the LCA, SA/ NT District (who spoke at the morning service a few months ago) will inform us what is going on in the wider church these days.

Next Sunday our YTL **Paul Swansson** will be speaking at our morning service and **Michael Edgecomb**, the Director of Children , Youth and Family ministries, LCA, SA/NT District, will be speaking at Salt Factory.

What came out of the CCs meeting last week? The new **CCs team** : Tiffany Tilley, Kylie Till and Vicki Abraham who met last Tuesday came up with a schedule for 3<sup>rd</sup> term. I love their enthusiasm and respect. They have some great ideas. The term includes: "Science madness with the mad scientist", "Master Chef", a trivia a night and a games night. I really appreciate how they have scheduled in a devotional section for each evening. If you would like to be involved, contact Tiffany or Vicki (their phone number are in our Community Directory)

Pastor Leon

## This week:

**Monday:** Vision For Ministry Team.  
**Tuesday:** School Council.  
**Wednesday:** Head to Heart at 3.45pm  
**Friday:** Worship at 8.45am  
**Friday:** CCs 6.30-8pm  
**Next Sunday:** Head to Heart at 4.30pm

(Unless otherwise stated all meetings start at 7.30pm)



## 'CC' Children of Christ

(For children in Yrs 3-6)

**Next Friday 31st July 2009,  
6.30—8.00 pm**  
in the Fellowship Centre

**"Science madness with the  
mad scientist**

Come and see what you can create with the mad scientist

For more details contact Tiffany (8289 6067), Kylie (0402081692), Vicki (8289 9305)

## Salt Factory Worship

**Tonight: 6.30 pm service— Come from 5.45 pm**  
onwards for food (gold coin donation) and drinks (\$1)

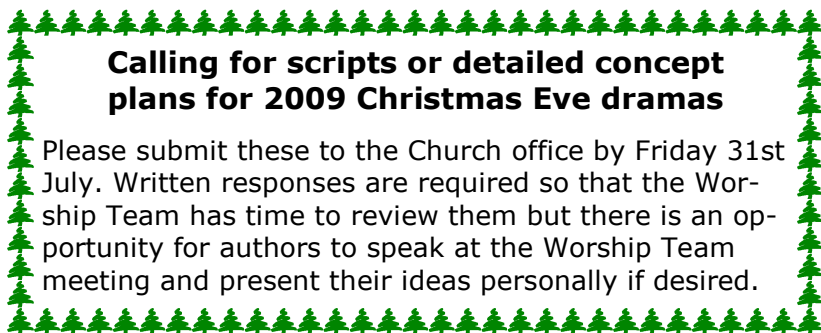
**Please note: Rostered for catering next Sunday 2nd August — Shrowder/Watson/Knapp/Doecke group**

## ROSTERS

The worship service **rosters for Sept—Nov** will soon be put together. **Today is your last chance to notify Anna Watson** in writing either by email

([watson.anna@goldengrove.sa.edu.au](mailto:watson.anna@goldengrove.sa.edu.au) or through a note in her pigeon hole) of any dates which you may be unavailable to serve during this next trimester.

This is also an opportunity for anyone who may have been thinking about serving in any of the many areas of our worship services (*morning or evening*) to let Anna know. **Extra help is always welcomed !**



## Calling for scripts or detailed concept plans for 2009 Christmas Eve dramas

Please submit these to the Church office by Friday 31st July. Written responses are required so that the Worship Team has time to review them but there is an opportunity for authors to speak at the Worship Team meeting and present their ideas personally if desired.



## Golden Grove Amateur Fishing

**ONKAPARINGA RIVER (Southport Beach)**  
**Sunday 9th August, 12.30—5.30 pm**

Parking near footbridge on Weatherald Terrace, Port Noarlunga South.

Note: Toilets are nearby

- Fishing in the river or the outlet on the beach
- Fishing for mullet, salmon, tommies, etc
- Suggested bait is cockles, whitebait, gents, etc.
- Opportunity to stay for tea at a local venue

Enquiries contact Graeme Hoklas (0419 828 091) or Zimmo (82891212)



## Servant September



Time Sunday – September 6<sup>th</sup>  
LCA Sunday – September 13<sup>th</sup>  
Treasures Sunday – September 20<sup>th</sup>  
Talents Sunday – September 27<sup>th</sup>

We are looking for small groups to 'adopt' a Sunday and organise a visual display for the worship services (similar to last year's Season of Creation). Contact the Worship Team if you are interested in helping out!

## KIDS AT HEART

Welcome to our Family Service this morning. We hope the children and everyone enjoy all that has been prepared.

For the children there will be a special surprise to eat in the Fellowship Centre at the end of the service. Yummy!

There will also be something for the children to take home and we ask if parents might find something suitable at home to display/hang the article.

A reminder to parents that children are welcome to use the kids' area and sit at the tables to read books or do a craft activity.

Blessings  
Lesley

### Seeking volunteers—Royal Adelaide Show

The Bible League Adelaide Show Outreach is looking for willing people to work a three-hour shift at this year's Royal Adelaide Show. The work—as ambassadors of Christ no less—is not onerous.

Volunteers are supplied with entry passes to the Showgrounds enabling volunteers to spend time at the Show before or after their shift(s).

If anyone is interested in giving their time to this you will need to fill in a volunteer's enrolment form (available from our church foyer) and return to the convenor by Monday 10th August 2009.

### Taste & See Some More THE LORD IS GOOD

**"Bearing Fruit" – the fruit of the Spirit**  
Saturday August 8<sup>th</sup> 2009, 9.15am – 4.00pm

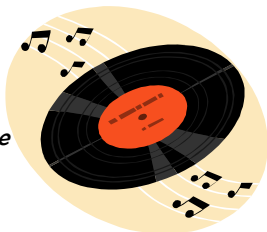
Presented by **RUTH OLSEN**

Hosted by and at **St John's Lutheran Church**  
Tea Tree Gully (see noticeboard)

### ENDEAVOUR COLLEGE CABARET 2009

#### Dancing in the Street

*Funk & Soul of the  
60s & 70s*



**FRIDAY 14th August 2009, 7.30 pm**

At Endeavour Centre  
85 Mawson Lakes Blvd, Mawson Lakes

ADULTS \$18/ CONCESSION \$15  
PHONE 8368 3311 FOR SINGLE OR  
GROUP BOOKINGS

BRING A BASKET SUPPER, LOOSE CHANGE &  
YOUR DANCING SHOES!

AND BE SURE TO WEAR YOUR FUNKIEST GEAR!

## THE Bethel SERIES

### Getting back to basics

Bethel is known the world over as one of the most accessible methods for understanding and interpreting the Bible.

Bethel has recently undergone a complete review and update by Australian theologian Canon Graeme MacRobb.

Bethel is suitable for study and teaching by pastors and lay people.

Meet Canon Graeme MacRobb as he presents an afternoon sampler of the revised Australian Bethel series

**2.30-5.30 pm Sunday 26th July 2009.** No need to RSVP, just turn up. Coffee provided

**At Zion Glynde Lutheran Church,**

15-17 Glynburn Rd, Glynde

Further info: Jon Goessling 0406085926 or it-gos@tpg.com.au



LUTHERAN COMMUNITY CARE

*'Sharing the love of Christ - building caring communities'*

### BASIC COUNSELLING COURSE

*Ten Sessions*

**Beginning Tuesday, August 18, 2009**

**4.45pm-7.15pm**

at

Lutheran Community Care

*Centre for Learning*

19 Edward Street, Magill.

This course introduces basic counselling skills with an emphasis on responsive listening techniques and finally, goal setting. The course is suitable for volunteers, visitors, church workers, youth workers and anyone who wishes to learn how to respond more effectively and comfortably to others experiencing difficulties in their lives.

Cost: \$22/sessions or \$210.00 for whole course.

Concessions apply.

For more information:

Contact: Helene Schulz T: 8331 3111; E:

hschulz@lccsa.org.au

**August issue  
out now!**

#### THE LONG GOODBYE

Dementia: losing your loved one  
a day at a time

#### GRANDPARENTS

The important role grandparents  
play in the faith life of children

#### LUTHERANS IN

#### PALESTINE

Their hardships, their heartaches  
and their hopes



It's your life  
your faith  
your family

**It's your magazine**

**Last chance to renew  
your subscription!**

**11 issues per year  
\$36 Aust, \$38 NZ**

You can SUBSCRIBE ON-LINE:  
[www.thelutheran.com.au](http://www.thelutheran.com.au)

or see your pastor or group collector for details



Prayer Chain

Means a lot of people praying about an urgent or special need. For urgent prayer requests during the week you are invited to contact one of following people and the prayer chain will be set in progress. (Chris Hahn, Jan Wegener, Pastor Len & Claire Tscharke, Catherina & Wim Belgraver, Joan Hochwald, Tanya Wilson, Judith Whaites.)

All requests will be kept confidential.

The prayer chain is available for everyone in both the church and school communities. Likewise if anybody feels they would like to be a part of the prayer chain we'd love you to join us.

Video Ministry

Each service is video taped, with copies available immediately after each service. Please see the library to loan a copy. Even if you can't make it to the service, you can still participate in worship.

Bibles

Bibles are available at the back of the church so that you can follow the Readings and Bible references in the Sermon.

We offer you one of these Bibles to take home, if you need one, and possibly bring back each week (so that *the one you use at home is the one you use in church*). If you would like to make a donation towards it - \$10 would be appreciated.

Meals Ministry

(A practical way we can share & show God's love) Families rostered to support Meals Ministry in July are: Ahrens, Baldock, Seeliger.

When donating meals for the freezer we ask that you please attach some details to the container, eg name of the meal, date meal was prepared, a list of main ingredients, and heating instructions.

Thank you.

Library

Don't forget the Library is open for browsing and borrowing.

Christian greeting cards always for sale from the Mobile Unit in the Fellowship Centre — Cost \$2

GGLF Attendance & Offerings

(Offerings do not include electronic giving amount of \$10945.80 per month from 36 contributors.)

	Attendance	Offerings
Sun 19/7 9.30 am	130	\$1534.80
6.30 pm	46	\$ 113.40

**Food for Thought**

(a monthly forum for students, graduates, and others)

**“Crossing Borders: Cross-cultural mission to and from Australia” Jess Vun will share her view and insights** at “Food For Thought” on Sunday afternoon the 26th of July, 4.00-6.00 pm at 137 Archer St North Adelaide. Jess is a **Masters student at ALC, from Sabah Seminary, Malasia**). All welcome. Parking and entry at the rear. Further enquiries to Pastor Mike Pietsch 8370 3615 or 0409 725 573.

**POSITIONS VACANT**

**Lutheran Community Care**

- **HR/Operations Manager**
- **PHP/MySQL Programmer**
- **Special Projects Manager**

Applications for all 3 above positions close 31st July

**Indigenous Lay Worker – Aboriginal Ministry South Australia, Port Augusta – 10 hours**

Applications close 5.00 p.m. Monday 10<sup>th</sup> August 2009

**Mission Facilitator, SA/NT District**

Applications close 5.00 p.m. Monday 20<sup>th</sup> August 2009

**Ministry Coordinator to Families with Young Children – Zion Lutheran Church, Gawler, SA - 20 hours**

Applications close 5.00 p.m. Monday 21st August 2009

Please refer to noticeboard for details

**Internet access** to weekly GGLF

bulletin, Sermon, Life in the Vine, rosters and other info. You can get to it by going to [www.gglf.org.au](http://www.gglf.org.au) and then clicking Files.

**Lutheran Nurses**—Next meeting Monday 27th of July 2009 at 7.30pm. The Topic is **“The Role of a Police Chaplain”** Speaker Rev. Terry Natt.

The venue is the SA District Office, 137 Archer St, Nth Adelaide. Enter through door at the rear.

The meetings are open to nurses and anybody who may be interested in the topic.

**Friends of Lutheran Archives**

**Seminar—Finding Forebears in Poland.** At Bethlehem House, Sudholz Place, Adelaide on Saturday 1 August, 2pm - 5pm. Cost \$20. Bookings to Lutheran Archives (tel. 8340 4009).

**City of Tea Tree Gully** invite interested people to a **Community Grants Forum** to be held on **Wednesday 5th August 2009, 5.45-8.30 pm** at the **Civic Centre, 571 Montague Road, Modbury.** Ph 8397 7444 for bookings.

Learn about CTTG Grant Programs & about applying for grants for project ideas. Supper provided



**LUTHERAN MEDIA**

Also refer to flyer on Notice board for program details.

**Listen to Face to Face**


26th July Battle with the Bottle

Alcoholism is an illness. It damages the whole person – body, mind and spirit. Its various stages generally preclude the possibility of self diagnosis and desire for recovery.

Join Richard Mau this week when he'll be talking with Noel. Join us and share in Noel's journey of addiction to alcohol.

**Pastor Leon's Message**

is available in printed copy form immediately after the service from the Church Foyer . Please feel welcome to take a copy home.


**BIRTHDAY GREETINGS**

Tues	28 July	Jenny Rawolle
Wed	29 July	Barbara Power
Thurs	30 July	Anna Watson
Fri	31 July	Nathan Shrowder

We hope your special day is blessed with God's love & grace

**GOLDEN GROVE LUTHERAN FELLOWSHIP**

**Pastor: Leon Rosenberg**

**GGLPS Principal: Daryl Trigg**

**Church Office:**

Sunnybrook Drive  
Wynn Vale 5127

**Postal Address:**

PO Box 1371  
Golden Grove 5125

Phone: (08) 8282 6050  
Email: [office@gglf.org.au](mailto:office@gglf.org.au)

**Church Office Secretary:**  
Judith Whaites

**Youth Team Leader:**

Paul Swansson  
0432 646 064

**Vision for Ministry Team:**

Pastor Leon  
Daryl Trigg  
Geoff Thiel  
Paul Swansson  
Daniel Bartel  
Jon Schiller  
Brian Quick  
Christiaan Hersevoort

**Management Team**

<i>Chairperson</i>	John Fielke
<i>Vice Chair</i>	
<i>Secretary</i>	Elnora Schmocker
<i>Treasurer</i>	Dorothy Quick
<i>Assist. Treas</i>	Graeme Hoklas
<i>Property</i>	Daniel Bartel
<i>Ministry rep</i>	James Leach
<i>Extra Member</i>	Dave Shrowder