



Our mission:  
**KNOWING  
 CHRIST AND  
 MAKING HIM  
 KNOWN**

# GOLDEN GROVE LUTHERAN FELLOWSHIP

www.gglf.org.au

Our goal:  
*Care, Communicate,  
 Connect so that people  
 may know CHRIST.*

## Pastor Leon Rosenberg

Available through the  
 Administration Office at  
 Sunnybrook Drive  
 Wynn Vale 5127

Ph: Office: 8282 6051  
 Mobile: 0432 224 721  
 Home: 7225 0581

Email: rosenberg.leon@  
 goldengrove.sa.edu.au

30th March 2014—Fourth Sunday in Lent

## WELCOME to all worshipping with us today

Greetings to any visitors here with us. We are pleased to have you join us and we trust you have felt welcomed and pray the Holy Spirit may enlighten and empower us with the message shared with us today.



Tea & coffee is available in the Fellowship Centre following morning service

Please feel welcome to join us.

### Before worship...

#### The LORD looks at the heart

*But the LORD said to Samuel, "Do not consider his appearance or his height, for I have rejected him. The LORD does not look at the things people look at. People look at the outward appearance, but the LORD looks at the heart."* (1 Samuel 16:7)

When God sent Samuel in his trepidation, to anoint (as he was to discover) David as king, God had to teach him this truth, above.

How important it is for us to take this to heart when we are tempted to judge, to condemn and "to throw the book at someone".

The teachers of the law fell into the trap of "considering" Jesus by his appearance. They had already made up their mind about him at his trial and "were looking for false evidence against Jesus so that they could put him to death" (Matthew 27:59).

By us taking this to heart we are, as Paul describes it in the second reading, living as children of light, for as he goes on to say, *the fruit of the light consists in all goodness, righteousness and truth* (Ephesians 5:9)

In regard to the way we treat people, isn't it so important to know that like us, people deep down are struggling? Yes, they cover it over by the way they present themselves and we can be fooled by they do and say. However, deep down, like all of us they are looking for acceptance, fulfilment and direction- their hearts' desire.

Allow the Lord to give you eyes so that you can see below the surface, hearts that beat for the best of that person before you - no matter how they are presenting themselves and tongues that are guided by wisdom, courage and patience.

Prayer: Father, thank you for the insight you give us today. Forgive us for throwing the book at people. Give us enlightened eyes, hearts and tongues that we may love the people you put before us. Amen.

Pastor Leon



### Readings for today

1 Samuel 16:1-13  
 Ephesians 5:8-14  
 John 9:1-41

### Worship Opportunities

Today	9.30am 11.30 am 6.30 pm	Contemporary worship with HC Korean Community Church Salt Factory worship with HC
Friday 4th April	8.45am	Informal worship with the school community followed by Coffee Club
Sunday 6th April	9.30am 11.30am 6.30pm	Contemporary worship with HC Korean Community Church Salt Factory worship with HC



### Family Friendly Worship

At Golden Grove, we love **everybody** to be involved in worship.

Please encourage children and visitors to join in the singing and prayers, and to stand and sit at appropriate times when they are able. This is best done by leading by example!

For our 'little ones' - Quiet bags & busy books are available for worship time from the children's area inside the church.

The "Kids at Heart" team run a QUIET craft table during the sermon. That way, the children have some time with their parents during the morning services, and also a little bit of time to be creative, to wriggle around and to learn about our God and what He means to us through artistic activities, with their friends. All children are welcome to join in this time. It is not appropriate for unattended children to play in the foyer at any time during the service. Please ask an usher if you require assistance, or speak to a "Ministry Leader" if you would like to help young families during worship times.

Thank you for worshipping with us!

## Pastor's Column

What memories do **the smell of books** draw from you? *Intimacy, struggle, pleasure*? These are some of the feelings we shall consider today as we continue our preparation during Lent for Good Friday and Easter (where we shall be considering the smell of love and hope).

The episode in Jesus' passion which we are having a closer look at today is Jesus' trial (**Matthew 26:57-63**) - where the teachers of the law "*threw the book at Jesus*". It brings to mind times when we unfairly judge and condemn other people.

Thank God that Jesus endured this to forgive us and to enable us to use the Scriptures in a much more positive way than they.

**Next week** the theme we take in **the smell of rope**. Remember they bound Jesus and remember too why he allowed them to do this. He was bound that we might be free.

What has bound you? Come along next Sunday and receive the freedom that Jesus offers.

Please note our **Easter Dawn Service** will be an ecumenical service at Golden Grove cemetery, combined again with Golden Grove Uniting Church. Unfortunately I got the time wrong in the "*In the Vine*" - **7am** not 6am, as advertised.

*Have you been using our weekly devotions "When God Almighty came to be one of them- a diabolical viewpoint"? These are available to download from our website during. (Go to the home page and in the "For members" folder.)*

As I informed you last week, our ministry team have provided Easter balloons for you to give away along with tracts and a pamphlet on our congregation at the **FISHING FETE** today. I hope you will join us in the fun of doing this. We are also encouraging you also to help the GGAF team set up after worship/a coffee this morning.

*Are you available to put out the chairs for District Synod on Thursday May 1<sup>st</sup>, 7pm at Mawson Lakes. Please let me know this morning.*

Pastor Leon

### What is happening during the week?

#### This week:

Wednesday (1/4/14)	Women's Fellowship 2.30pm at 42 <sup>nd</sup> Street.
Wednesday (1/4/14)	Manna (communications) team 4.30pm
Thursday (2/4/14)	The Journey (session 7) 3.15pm
Friday (3/4/14)	Worship with the school community 8.45am
Friday (3/4/14)	Awakening/Revival 7pm

#### Next week

Monday (7/4/14)	Sit and Sew 7pm
Thursday (2/4/14)	The Journey (session 8) 3.15pm
Friday (3/4/14)	worship with the school community 8.45am
Saturday (4/4/14)	10am GGAF at Cadell 10am

That during this season of Lent we have weekly devotions "When God Almighty came to be one of us—a diabolical viewpoint." These are available to download from our website—[www.gglf.org.au](http://www.gglf.org.au). Go to the home page and in the "For members" folder.

DID YOU  
KNOW ?

# Fishing Fete—TODAY

## 12 noon—4.00 pm

### Can you help Cook?

As part of the Fishing Fete, the Tea & Coffee Stall would like donations of biscuits, muffins, large cakes and slices to sell on the day.

Around 1000 people have attended previously, so it would be fantastic to have a generous supply of food available.

Could items please be packaged and labelled with a list of ingredients.

Any queries or offers of help on the day to Leanne Schiller please 8289 2997.



### Asaroka Fundraiser - Charter Raffle

There is a Charter Raffle as a fundraiser for Asaroka, as part of the Fishing Fete.

This year the Prize will be "**Charter for 2 people - 9 hour, Offshore, leaving from West Beach**". Tickets will be \$2. Prize value is \$500. Tickets available on the day at the fete.

**We are still looking for volunteers to help man the Raffle Stand during the Fete, even if only for a while**

Daniel Dutschke. 0437896892



### BOOK STALL TO BE HELD AT FISHING FETE

One of our friendship groups has "booked" a Book stall and would be very happy to accept donations of books and DVD's.

Now's the time to start sorting through your collections and if you have such items you are willing to donate please store them up and please bring donations to the stall **ON THE DAY**

Book Sale



### Multiculturalism & Secularisation of Education and its implication on Christian Values.

## Dr Patrick Sookhdeo



### Thursday 3 April 2014 2.30 - 4.30 pm

Afternoon tea followed by presentation by Dr Patrick Sookhdeo at 3.00 pm *There will be no charge for attending this event.*

Location:

 Tea Tree Gully Community Church  
*Connecting in Community*

**1405 Golden Grove Rd  
(Corner Golden Grove Rd and One Tree Hill Rd) Golden Grove**

A Pray Tea Tree Gully event in the interests of community development.

Dr Patrick Sookhdeo is the Director for the Institute for the Study of Islam and Christianity and the International Director of the Barnabas Fund, a charity that supports persecuted Christian minorities around the world. Dr Sookhdeo has lectured British and NATO military officers on radical Islam. He is the author of numerous papers and author/editor of several books including *Global Jihad: The Future in the Face of Militant Islam* which is mandatory reading for NATO officers. He holds a PhD from the School of Oriental and African Studies, London University.

# RosTers

for Next Sunday : 6th April

PA + Opening/Closing up	Power-point	Music Group	Greeters / Ushers	Readers	Children's Address ----- Kid's Craft	Devotion for Bulletin ----- Prayers	Assistants with HC	Flowers	Church Cleaning	Salt Factory catering
Mark Rawolle	Tanya Wilson	Jacque Schutz	J.Canavese D.Quick	Matthew Bishop	K.Appelt ----- S.Williams	Jason Kupke ----- M.Bishop	D.Shrowder Allen Kupke	Dorothy Quick	School	
Simon Ahrens			Elnora Schmocker							Thiel/ Rawolle

## Youth News!

**Awakening**

**Revival**

*Ephesians 5:8 - For you were once darkness, but now you are light in the Lord. Live as children of light.*

*Isaiah 53:10b - He gave Himself as an offering for sin so that He'd see life come from it.*

We're combining for our last youth event of Term 1 (boy, where has the time gone?!) On **Friday, April 4** from **7pm** until **9:30pm**, we will be giving back to our local community by doing a local Working Bee. Why shouldn't we help out our community? We'll make sure it's plenty of fun. We have asked some members of our congregation if we can come around to help with some gardening or housework. So come along a giving spirit and an older pair of clothes and get involved. Food provided, no cost, \$1 cans and Childsafe needed! J

A fascinating night at our last Awakening, as we learnt a bit about the Korean culture. We started with a passionate rendition of our classic game, No Not I Sir! The youth also played Yut, a Korean board game with similar rules to Trouble, and also made some delicious sushi rolls. In devotion and small groups, we talked about authority, discipline and the life of Moses in general.



[jason@gglf.org.au](mailto:jason@gglf.org.au)    0403 180 607    [youth.gglf.org.au](http://youth.gglf.org.au)

## GGLF Working Bee



**Saturday 3<sup>rd</sup> May    8:30am to  
3:00 pm**



We'll be carrying out a variety of jobs around the school and church facilities, including general tidy-up (inside and out), painting, repairs to chairs, and other miscellaneous jobs.

As well as improving our facilities, working bees are a time of fellowship and an opportunity to become better acquainted with others in our community.

If you have any queries, or are aware of any specific jobs that you feel should be done, please contact Simon Ahrens (0421 910 604).

Morning tea and lunch will be provided.

## Girls Getaway

**Just a reminder to pick up a flyer & return with deposit \$30 to school/church office by end of March.**

## CHRISTMAS PLAY SCRIPTS

All budding scriptwriters are asked to submit their offerings for this year's Christmas Eve play.

Please remember it needs to be family / child / community friendly and run for no longer than 45 minutes.

We require the plays before the end of June ready to choose the finalist and start preparations in August.

Scripts may be left at the Office or given to a Worship Team member.

## Name badges

We are placing a name badge order for those requiring one. There is an order form on the table near the front door. Could this please be filled out and given, with money, to Margot Mertin or to the Church office. Please have your forms in by April 9th.

## SHED HAPPENS



Former ABC reporter, Air Force Officer and author. He divides his time between ABC Radio and serving on the pastoral care team at a Sunshine Coast school. He has plenty of good stories to tell, having worked in radio, television and print media from the Korean border, to the Arctic Circle, Tonga to Timor, gathering friendships and garnering awards along the way.

As well as hosting the successful Saturday Breakfast ABC program in Brisbane he presents a national program on Sunday afternoons. He dedicates a 30 minute segment of his breakfast programme to Shed Happens, men's issues, with Ian "Watto" Watson. Come and share a steak burger with Phil, and don't forget to bring a friend. Where: Good Shepherd Lutheran Church, 388 Montague Road, PARA VISTA

When: Wednesday 2nd April 2014 at 7 pm

Donation: \$10

Any questions: Ring Jim on 0438 899 629 or Gavin on 0403 086 052

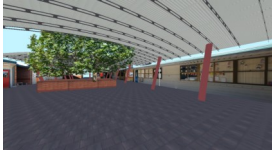
PLEASE NOTE: This is in place of the "Shed Happens" scheduled for 8th April. (2nd Tuesday)

Back to the 2nd Tuesday in May

**Daily Bible Readings for this week**



Mon: (31/3/14) John 6:41-59  
 Tues: (1/4/14) John 6:60-71  
 Wed: (2/4/14) John 7:1-13  
 Thurs: (3/4/14) John 7:14-36  
 Fri: (4/4/14) John 7:37-52  
 Sat: (5/4/14) Psalm 130  
 Sunday: (6/4/14) Ezekiel 37:1-14  
 Romans 8:6-11  
 John 11:1-45



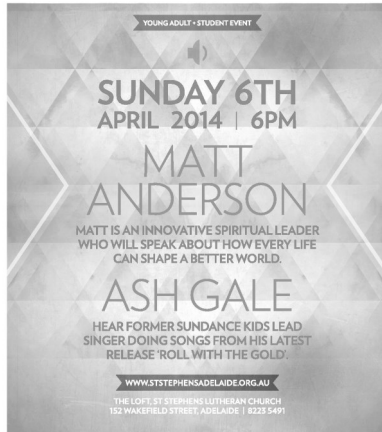
**School Courtyard Shade Project**

The school is currently running a fund-raising project to build a shade structure across the courtyard. Any assistance you can offer will certainly help out. Even a dollar or two will help. Please help out by donating through the school website. <http://bit.ly/gglf2ggpls>



We hope your special day is blessed with God's love & grace

Thurs April 3 Fay Campbell  
 Fri April 4 Tye Schiller



**Lutheran Media Mini Movie series**

Lutheran Media has produced a series of 5 new mini movies that are being released every couple of weeks. The series is called "Chronic". It tells the story of Pastor Stephen and Therese Abraham and is designed to give people hope in the midst of suffering. Please go to [www.facetoface.org.au](http://www.facetoface.org.au) to watch a 30 second clip promoting the series about the upcoming Chronic Pain series. It's also on [www.youtube.com/luthmedia](http://www.youtube.com/luthmedia) and called "Introducing Chronic". You may also like to subscribe to our YouTube channel so you don't miss them. The first mini movie is planned for release on the 14th March 2014 on the Face to Face website and our YouTube channel



Support for the work and ministry of **Lutheran Community Care** is ongoing and encouraged. **LCC's request list for March** is for Chux, scourers, small cleaning brushes, sponges. Boxes and bags are always in the Foyer waiting to be filled! Donations will be kindly transported to LCC at the end of each month.

**PLEASE CHECK OUT THE NOTICEBOARD FOR MORE POSITIONS VACANT NOTICES AND OTHER OPPORTUNITIES**

**Aid for Hearing Impaired**

As an aid for the hearing impaired, the service is transmitted on 88.3 MHz FM radio.

**Prayer Chain**

Means a lot of people praying about an urgent or special need. For urgent prayer requests during the week you are invited to contact one of following people and the prayer chain will be set in progress. (Pastor Len & Claire Tschärke, Jon Schiller, Tanya Wilson, Judith Whaites.)

All requests will be kept confidential.

The prayer chain is available for everyone in both the church and school communities. Likewise if anybody feels they would like to be a part of the prayer chain we'd love you to join us.

**Worship recording**

Each service is recorded. DVD's can be ordered for a \$5 donation. See the Church Office.

**Bibles**

Bibles are available at the back of the church so that you can follow the Readings and Bible references in the Sermon.

We offer you one of these Bibles to take home, if you need one, and possibly bring back each week (so that *the one you use at home is the one you use in church*). If you would like to make a donation towards it - \$10 would be appreciated.

**Meals Ministry**

(A practical way we can share & show God's love) **Families rostered to support Meals Ministry in March are: Ahrens & Baldock**

When donating meals for the freezer we ask that you please attach some details to the container, eg name of the meal, date meal was prepared, a list of main ingredients, and heating instructions. Thank you.

**Library**

Don't forget the Library is open for browsing and borrowing.

Christian greeting cards always for sale from the Mobile Unit in the Fellowship Centre —Cost \$2 .

**Pastor Leon's Message**

is available in printed copy form immediately after the service from the Church Foyer . Please feel welcome to take a copy home.

**Internet access**

to weekly GGLF bulletin, Sermon, Life in the Vine, rosters and other info. You can get to it by going to [www.gglf.org.au](http://www.gglf.org.au)

**Stamps For Missions**

Remember to keep collecting your used postage stamps for missions. Box in Foyer.

**GOLDEN GROVE LUTHERAN FELLOWSHIP**

**Pastor: Leon Rosenberg**

**GGLPS Principal: Daryl Trigg**

**Youth Worker**  
 Jason Kupke (0403 180 607)

**GGLF Council**  
 Chairperson Grant Hampel

**Church Office Secretary:**

Vice Chairperson Elnora Schmocker  
 Secretary Mardi Kalika

Judith Whaites

Worship Ministry Jacquie Schutz

**Church Office:**  
 Cnr Richardson & Sunnybrook Drives  
 Wynn Vale 5127

Plant & Human Resources Simon Ahrens  
 Outreach Lauren Thiel  
 Stewardship Daniel Bartel  
 Youth Jason Kupke  
 Children & Family Margot Mertin  
 Elder/Pastoral Care Elnora Schmocker  
 Treasurer Simon Williams

Postal Address:  
 PO Box 1371  
 Golden Grove 5125

Extra members Christiaan Hersevoort  
 Jason Kupke  
 Principal (ex officio)  
 Pastor (ex officio)

Phone: (08) 8282 6050  
 Email: [office@gglf.org.au](mailto:office@gglf.org.au)

**GGLF Attendance & Offerings**

(Offerings do not include electronic giving amount of approx. \$12000 per month .)

The LLL Account No. for GGLF Regular Electronic Giving is 28190/S1/GOL

**To transfer money into the LLL Golden Grove Lutheran Fellowship REG A/c please use: BSB (Branch) number - 704942 and Account No. - 28190**

		Offerings	Attendance
9/3/14	9.30am	\$341.65	96
	11.30am Korean	\$161.00	24
	6.30 pm SF	\$ 78.30	32