



GOLDEN GROVE LUTHERAN CHURCH



www.gglc.org.au
 Email: office@gglc.org.au

Pastor Greg Fowler
 currently on leave

Locum tenens Pastor:
 Dennis Obst

Mobile: 0418 839 051

Office: 8282 6051

17th June 2018—4th Sunday after Pentecost

WELCOME to worship today

May we all be encouraged and strengthened in our faith through the Word of God and the Lord's Supper which we share with one another.



Tea & coffee is available following morning service and at 5.45 pm a light meal is available prior to the 6.30 pm service.

Please feel welcome to join one another. **ALL WELCOME**

Before worship

The account of Samuel, Saul and David gives us a good insight into God's dealings with people. Samuel needed correction and God gave him a job that would help him learn.

God had allowed Saul to become King when he had been chosen by the people. Saul was well known, popular and stood out from the crowd with his strong physical attributes. But God had rejected Saul as King because he served himself instead of God. Now it was time for God to select a new King with the right spiritual attributes for the job.

When Samuel was instructed by God to anoint a new King of Israel, God had to teach him what was important. Samuel initially looked for a Saul look-a-like and God corrected him. Jesse followed Jewish custom which decreed that the eldest received priority in a family. But God chose differently - David was chosen, the eighth of the sons of Jesse, the last to be presented to Samuel and God chose him because he was, 'a man after my own heart'.

The anointing of David was done in a very low-key way, a simple act, without the fanfare of Saul's election, but it was not an empty ceremony. The Spirit of the Lord came upon him from that day on. God's divine power was dispensed and David had wisdom, courage and a heart of justice. We can draw parallels for ourselves in the simple act of Baptism - low key but life changing! The story is a revelation of God's priorities and it involves what Paul describes in Cor 12 when he acknowledges that a 'sincere heart' is better than 'spectacular ministries'. What we see and judge is not what God sees or judges. We too need to learn the lessons God had for Samuel.

Lord God help us to recognise Your Spirit at work in hearts and lives and not judge by worldly standards. Thank you that through Your anointing we are reborn to be bear Your heart. Amen

Margey Knapp



Readings for today: 1 Samuel 15:34—16:13

2 Cor. 5:6-19

Mark 4:26-34

Salt Factory Worship

Tonight

6.30 pm

Come at 5.45 pm for food and fellowship before the service commences.

Gold coin donation.

Look forward to seeing you there!

Worship Opportunities

Today 17th June	9.30 am 6.30 pm	Contemporary worship with HC Salt Factory worship
Friday 22nd June	8.45-9.15 am	Informal worship with school community ALL WELCOME
Sunday 24th June	9.30 am 6.30 pm	Contemporary worship with HC Salt Factory worship
Friday 29th June	2.30 pm	End of term 2 chapel

What's Happening in our community

Monday 18th June	Tuesday 19th June	Wednesday 20th June	Thursday 21st June	Friday 22nd June	Sunday 24th June
7.30 pm Worship Team meeting	7.30 pm Rostrum Club meeting		7.00 pm Ladies Bible Study	9.30 am Mainly Music / Playgroup	9.30 am Worship
				7.15 pm Youth ALPHA	6.30 pm Salt Factory Worship

Kids at Heart

Children are very welcome to join Kids at Heart children's ministry time during the morning worship service.

This Sunday's BibleSong topic is : "Parable of the sower"

The Kids at Heart BibleSong program operates under the ChildSafe LCA program which is a safety and risk management system with a focus on keeping children and young people safe

Firewood Available for Ordering - All proceeds go toward the GGLC renovations.

Please use the online form at <http://bit.ly/gglcwood> to place an order.

6x4 trailer: \$135

7x4 trailer: \$155

8x5 trailer: \$220 + \$200 per additional layer

Kindling: \$10 per 7.5kg bag.

Further details are available on the online ordering form.



Playgroup/mainly music held Fridays , 9.30 – 11.00 am in the Worship Centre during school term

SEEKING VOLUNTEERS

To assist in

- morning tea
- setting up playgroup toys
- packing away
- serving parents
- general connection and communication.

Any questions please contact Natasha Jaeschke through the church office (8282 6050).

Fast & Furious Firewood Fundraiser

It's Fast because winter is here.
It's Furious because that also starts with F.
It's a Firewood Fundraiser to raise funds for our renovations.

NEEDING YOUR HELP

SATURDAY JUNE 23

<http://bit.ly/gglcFFFF> for details



GOLDEN GROVE LUTHERAN CHURCH

women's bible study

growing deeper, together

Held each Thursday evening during school term 7.00-8:30 pm. at Ahrens' house.

ALL WELCOME.

Anyone interested can call Lee Norrey (mobile 0414 346 062)

RosTers

for next Sunday 24th June

PA + Opening/ Closing up	Power-point	Music Group	Greeters / Ushers	Readers	Kid's @ Heart	Devotion for Bulletin Prayers	Assistants with HC	Flowers	Church Cleaning
Robert Mills	Geordie Mills		Graeme & Rosalie Hoklas	Jesse Hahn	Natasha Jaeschke	Ps Dennis K Campbell		Carolyn Wachtel	School

explore
life
faith
meaning

GOLDEN GROVE LUTHERAN CHURCH
GGLC Youth Group

YOUTH

Friday June 22
Golden Grove Lutheran Church
Free Yr 7-12 7.15pm-8.45pm
Paul Voigt: 0475 218 447
alpha.org.au/ays

Alpha

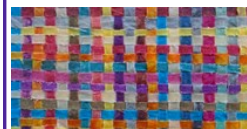
Christian Book Sale

Following morning worship next Sunday 23rd June there will be a sale of Christian books from our GGLC Library.

These will include adult and children's books, fiction and non-fiction.

Come along and browse what's on offer.

CASH ONLY SALES PLEASE.



**An invitation for Ladies to the
Winter Weekend Retreat**
brought to you by Golden Grove
Lutheran Community

Theme is *Interwoven*

**Friday 29th June—Sunday 1st July 2018
at Nunyara Conference Centre, Belair**

Ladies you are warmly invited to come along to this weekend retreat to rest, relax, refresh, have fun & fellowship. Take the opportunity to

- Get to know other Mums (& Grandmas or daughters ...)
- Hear some of the inspiring life stories ('herstories') of others
- Dress up in colourful accessories for Saturday night
- Make connections within the school, church & local community

Sound good? Register online today through GGLC website!

'I want you woven into a tapestry of love, in touch with everything there is to know of God. Then you will have minds confident and at rest, focussed on Christ, God's great mystery.' Colossians 2:2

Paper forms are also available from the church / office.

Cost: \$150 First-timers \$140

Part-time & subsidies available – Bring a friend!



SPOT ON FISHING TACKLE NIGHT **Monday 25th JUNE 2018 at 7.30pm**

WHERE: GGLPS - SCHOOL CONFERENCE ROOM

FEATURING: SPOT ON Presentation – Baits, Berley, Lures & New Products
PIRSA– Presentation by Toni Manning
Prize Draw & Light Refreshments & Supper
ALL WELCOME including Non Members
Enquiries : See Graeme Hoklas – Phone 0419 828 091

Next Event: 13-16 July: Streaky Bay (Eyre Peninsula)

New "Connect Groups"

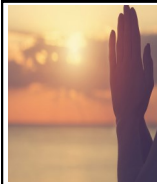
The new **Connect Groups** are seen as such an important ministry within GGLC that Pastor Greg would like to be personally involved in developing leaders for each group and helping to determine the members of each group. Unfortunately the timing didn't allow this to be achieved before he went on leave, so we'll be following up to establish the groups when he returns. Our apologies for any confusion this might have caused following the survey. Please contact Dave Shrowder if you have any questions"

Lutheran Teachers College

Lutheran Teachers College est. 1968 (LTC) was the training ground for prospective teachers & Lay Workers in the church for many years. These people are now part of Australian Lutheran College.

At the Friends of Lutheran Archives (FoLA) meeting on **Monday 18th June**, Dr Richard Hauser (a published author) directs a panel of 7 early LTC graduates and a lecturer as they reflect on their LTC experience – serious & funny.

Bethlehem House, Sudholz Place, City, **7.30 pm**. Supper & gold coin donation.



Do you desire to see God doing more things in our community?

Do you want to see good and wholesome change in Golden Grove and surrounds?

Are you trying to pray more but it's just not happening?

PRAYER SCHOOLS BREATH FRESH LIFE INTO CHURCHES ACROSS AUSTRALIA

GOLDEN GROVE LUTHERAN CHURCH IS HOSTING ONE SOON.

The all age school is starting in July, on Wednesday evenings over 6 weeks.

To register interest, or for more information, call Rodney Hall 0421965590



GGLC Renovations - Tax Deductible Donations

Donating to the School Building

Fund for carpet replacement in the Worship Centre is an effective way to support our overall renovations project, which includes carpet, chairs, cafe, office, deck and toilets.

Details of the Cafe, Office, Deck and Amenities renovations, with information on how to make tax deductible donations to the School Building Fund, can be found on

our website at <http://www.gglc.org.au/gglc/news/2017/06/11/renovation-plans/>

Confirmation Class

When Pastor Greg returns from Long Service Leave in July he intends to commence Confirmation classes *(late July when Term 3 begins)*. If you would like your child to undertake confirmation classes could you please register your interest with Judith in the office (*email: office@gglc.org.au or phone 8282 6050*).



Videos of Sunday's messages can be viewed on our website or YouTube, and announcements are made on Facebook and Twitter as soon as new items become available.

If you choose to give the video posts a Like/Share/Favourite/Retweet on Facebook or Twitter, you're helping to increase the number of people that might see Pastor Greg's message. A seemingly trivial click - it may be the easiest act of ministry you ever do!

Website: <http://www.gglc.org.au/>, go to "For Members" and select "Pastor's Messages"

Facebook: <https://www.facebook.com/gglc.lca/>

GGLC OFFERINGS

Members are offered the opportunity of Regular Electronic Giving (REG) which provides a way to give regularly and consistently without having to remember to bring money for the offering plate every Sunday. More information about REG can be found in the [Giving section of the LLL website](#).

The LLL Account No. for GGLC Regular Electronic Giving is 28190/S1/ GOL

To transfer money into the LLL Golden Grove Lutheran Fellowship REG A/c from another bank please use:
BSB (Branch) number - 704942 and Account No. - 28190

Support for the work and ministry of **Lutheran Community Care** is ongoing and encouraged.

During the month of **June LCC** invite you to replenish their Emergency Relief shelves with donations of **Milo; Coffee; Jam; Face washers**.



Boxes and bags are always in the Foyer waiting to be filled!